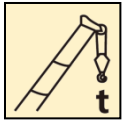
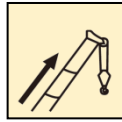


汽车起重机 / Truck Crane

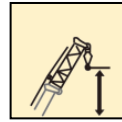
XCT30_S



30 t



42 m



50.2 m

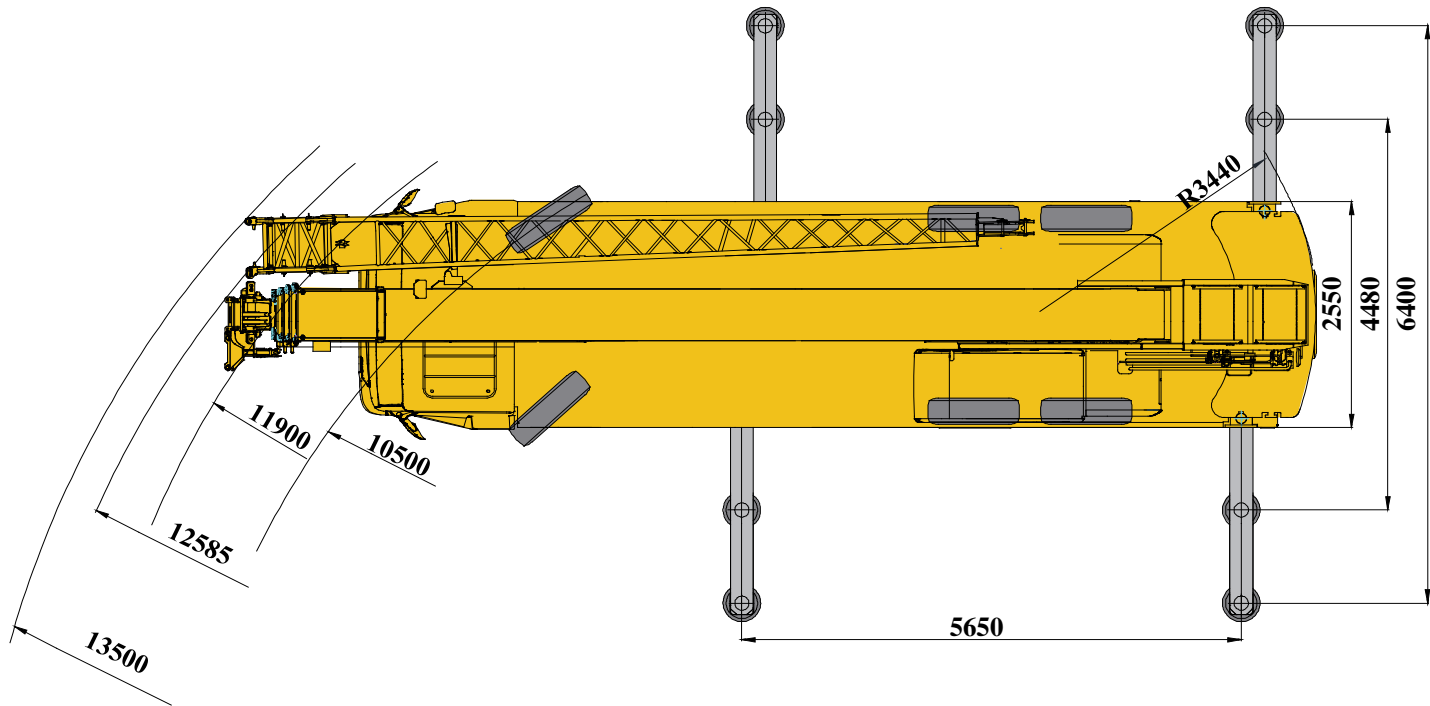
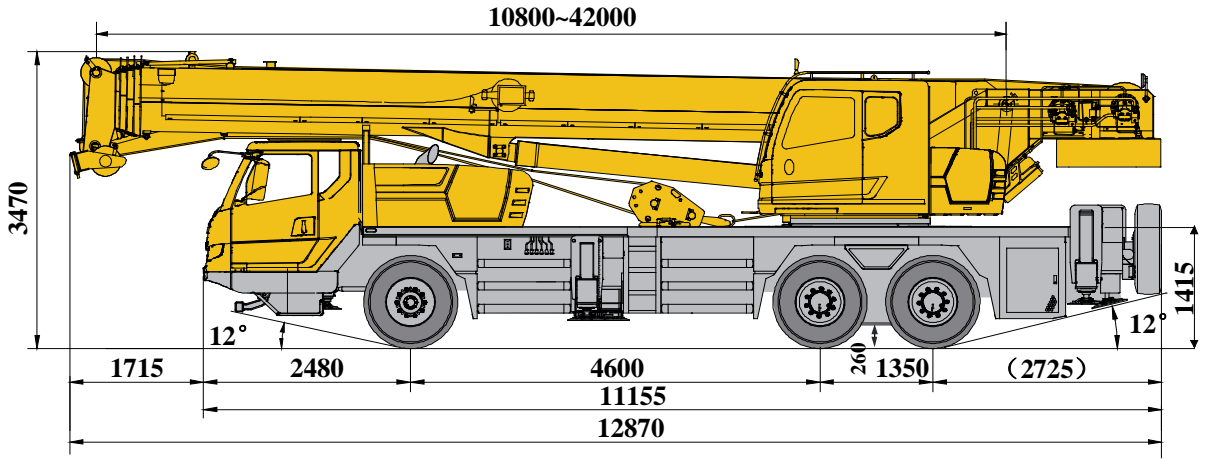


目录

Content



目录 Content	
尺寸参数 Dimensions	4
技术规格 Product Specifications	5-6
重量/作业速度 Weight / Working speeds	7
臂架组合方案 Boom / Jib combinations	8
主臂 Boom	9-11
副臂 Jib	12-13
符号标识 Description of symbols	14
主要技术参数表 Transportation plan	15-16
注意事项 Notes	17



尺寸参数 Dimensions



技术规格

Technical specifications

	底盘
车架	徐工设计、制造，全覆盖式走台板，防扭转箱型结构，高强度钢材制造。
支腿	4支腿；纵向H形布置，操作杆控制液压动作，可由底盘任一侧同时或单独控制各支腿的动作，设有水平仪；带第五支腿；且垂直支腿带有液压双向锁 支脚盘尺寸：φ400mm 最大起重量时支腿反力：323KN
发动机	SC9DF340Q5，直列六缸水冷电控柴油发动机，上柴，额定功率245kW/1900rpm，最大扭矩1450Nm/1400rpm，欧V排放标准。 燃油箱容积：228L。
变速箱	法士特9档变速箱，机械操纵，带同步器
车桥	美驰高强度车桥，2,3桥驱动
悬挂	前悬架：纵置钢板弹簧，筒式减震器； 后悬架：橡胶悬架，V型推力杆导向
轮胎	10个轮胎，1个备胎，前桥装单胎，中桥、后桥装双胎。 轮胎规格：315/80R22.5
制动	行车制动：双回路气压制动，作用于所有车轮。 驻车制动：弹簧储能制动，作用于2-3轴车轮。 辅助制动：发动机排气制动和缓速制动
转向	机械式转向机构，带有液压助力
驾驶室	全宽驾驶室，乘员2人；配置GLONASS紧急呼叫装置、收放机、可调式座椅、方向盘、安全玻璃、3只雨刷器、电动后视镜、电动门窗升降器、杂物箱、2公斤灭火器、空调
电气系统	直流24伏特，串联12伏特的电池组2个。 发电机 28伏特-70安培。
	上车
结构	徐工设计、制造，高强度钢材制造。
液压系统	底盘发动机驱动变量柱塞泵，用于起升、变幅、伸缩。负载敏感式比例多路换向阀，带有抗冲击阀、防气蚀阀；风冷式液压油散热器； 液压油箱容积：490L
操纵方式	液控先导操纵系统，由左右2个操纵手柄控制由液压泵和比例阀进行液压先导式控制起重机的全部动作

	上车
主起升机构	液压控制调速，装有双折线绳槽卷筒，由液压马达通过行星齿轮减速器驱动，内置常闭式制动器并带有平衡阀；
副起升机构	液压控制调速，装有双折线绳槽卷筒，由液压马达通过行星齿轮减速器驱动，内置常闭式制动器并带有平衡阀；
回转机构	四点接触球式回转支承，由液压马达驱动行星齿轮回转机构减速器驱动，可连续回转360°；具有动力控制或自由回转的功能，可无级调速；回转杆设有鸣响开关；
变幅机构	单支双作用前置液压变幅油缸，带有平衡阀
操纵室	新型钢制操纵室，装有无视野死角的前景窗，安全玻璃，车窗装有遮阳板，推拉式车门，座椅靠背可倾斜定位，操纵杆安装在座椅两侧的扶手台上；带推拉踏板；前窗顶窗装有雨刮器；标配冷暖空调；
安全装置	液压平衡阀；液压溢流阀；液压双向锁；力矩限制器；三圈保护器，防止钢丝绳过放；臂头设置高度限位，防止钢丝绳过卷；三色报警灯；
	臂架系统
主臂	5节，“U”形截面的筒形焊接结构。双缸绳排伸缩机构 主臂长度：10.8m~42m。
臂端单滑轮	单滑轮，安装在主臂顶端用于单股钢丝绳起重作业，起重性能与9m副臂0°安装角时的起重性能，但最大起重量不超过2.8t
固定副臂	1节桁架式焊接结构，具有0°、15°、30°三种固定副臂安装角 固定副臂长度：9m


选装配置


安全装置	风速仪、上车水平仪、倒车影像、驾驶室顶部警示灯、上装EAC认证功能：包括虚拟墙、低温报警、高压报警功能。
-------------	--


产品各部件明细如上所述，具体部件明细请参照产品报价单


技术规格

Technical specifications

 Chassis	
Frame	Designed and manufactured by XCMG, with all covered walking surface, anti-torsion box structure and optimal load-bearing structure design, made of imported high strength steel.
Outrigger	4 outriggers, H-shaped arrangement, lateral and vertical outrigger controlled by the hydraulic control. Control levers are located on both sides of the chassis, with a luminous level gauge equipped, with the fifth jack, and the vertical outrigger has two-way hydraulic lock. Outrigger float dimension: $\phi 400\text{mm}$ Max. outrigger reaction force: 318.2KN
Engine	SC9DF340Q5, in-line six-cylinder water-cooled EFI diesel engine, manufactured by Shanghai Diesel Engine Co., Ltd., rated power 245kW /1900rpm, max. torque 1450Nm / 1400rpm, Euro V emission standards. Fuel tank capacity : 228L
Gearbox	FAST manually mechanical control , 9-speed available, synchronizer is equipped.
Alxes	High strength axle with reliable performance from Meritor. 2nd axle and 3rd axle for driving
Suspension	Front suspension: longitudinal leaf spring suspension with barrel shock absorber; Rear suspension: V-type thrust rod structure, and rubber spring suspension.
Tires	10 tires and 1 spare tire, front axle is equipped with single tire, middle axle and rear axle are equipped with double tire. Tire specifications:315/80R22.5
Brakes	Service brake: double-circuit air pressure brake, acting on all wheels. Parking brake: spring energy brake, acting on wheels of 2-3 axles. Auxiliary brake: engine exhaust brake and engine in-cylinder brake.
Steering	Mechanically steering mechanism with hydraulic power assisted.
Driver's cab	Full-dimension driver's cab, two passengers are allowable. Equipped with GLONASS device, radio, adjustable seats, steering wheel, safety glasses, electrically controlled windshield washer, electrically operated rearview mirror , electrically operated door window glove box. and 2 kilograms fire extinguisher. Heater and air conditioner are available.
Electrical system	24V DC, two sets of battery. Generator: $28.5 \pm 0.3\text{V-}70\text{A}$

 Superstructure	
Frame	Designed and manufactured by XCMG; made of high-strength steel
Hydraulic system	The variable plunger pump driven by engine is used to control hoisting, elevating and telescoping. Load sensitive proportional multi-way change valve, impact-resistant valve and anti-cavitation corrosion valve are equipped. Air-cooled hydraulic oil radiator; Volume of hydraulic oil tank: 490L
Operating mode	Hydraulic pilot control of all crane movements using two control levers. All crane movements are controlled by hydraulic pump and proportional valve.

 Superstructure	
Main winch system	Hydraulic controlled speed regulation, groove drum is equipped, driven by hydraulic motor through planetary gear reducer, and built-in normally closed brake and counterbalance valve are available.
Auxiliary winch system	Hydraulic controlled speed regulation, groove drum is equipped, driven by hydraulic motor through planetary gear reducer, and built-in normally closed brake and counterbalance valve are available.
Slewing system	Four-point ball contact slewing ring. Slewing system is driven by hydraulic motor, with planetary gear reducer, for 360° continuous rotation, stepless slewing speed regulation is available. Horn button is equipped on the control lever.
Elevating System	Single-supported double acting front-mounted hydraulic elevating cylinder, with balance valve equipped.
Operator's cab	New fully-enclosed steel tiltable cab with a full-view front window. Safety glass and sun shield are used for windows. Wipers are fitted for the windshield and roof window. The cab features a new ergonomic seat design with backrest adjustment and armrests with joysticks fitted. A sliding door and a pull-out step are available. Air conditioner are available.
Safety devices	Hydraulic balance valve; Hydraulic relief valve; Double-way hydraulic valve; LMI; spring aligning device for joystick; Lowering limiter for preventing wire rope from over-releasing; Anti-two block at boom head for preventing wire rope from over-winding; tri-color warning lamp.

 Boom system	
Boom	5-section, U-shape cross section, welding structure. Double-cylinder plus ropes telescoping system is designed to extend/retract the boom. Boom length:10.8m ~ 42m.
Single top	Single top is installed on the top of main boom, for single wire rope hoist. Its lifting performance is the same as that for jib(8.3m), with 0° jib offset angles.
Jib	1-section, Lattice jib, welded structure. Three offset angles of 0° , 15° and 30° . Fixed jib length: 9m

Additional equipment	
Safety devices	Anemometer, level gauge, backup camera , caution lamp, Functions for EAC certificate, including virtual wall, low temperature warning and high voltage warning functions .

Product parts details As mentioned above, please refer to the product quotation for specific parts.

重量 Weight






车桥 Axle	1	2	3	总重量 Total weight
t	7.4	12.8	12.8	33








吊钩 Hook	倍率 No. of lines	吊钩重量 Weight kg	吊钩尺寸 Dimensions mm	备注 Remarks
30t	8	260	366×430×1252	单钩 Single hook , 标配 Standard
3t	1	60	236×236×503	单钩 Single hook , 标配 Standard

作业速度 Working speeds



		
315/80 R 22.5	2.5 ~ 80	45%



作业机构 Drive	作业速度 Working speed	最大单绳拉力 Max. single line pull	钢丝绳直径/长度 Rope diameter/ length
	0-135 m/min, 单绳, 第四层 m/min, single line, 4th layer	40 kN	16 mm/180 m
	0-135 m/min, 单绳, 第四层 m/min, single line, 4th layer	40 kN	16 mm/110 m
	0-2.5 r/min		
	从-2°抬起至79°约35s Approx. 35s for boom elevation from -2° to 79°		
	从10.8m伸出至42m约95s Approx. 95s for boom extension from 10.8m to 42m		

臂架组合方案

Boom / Jib combinations

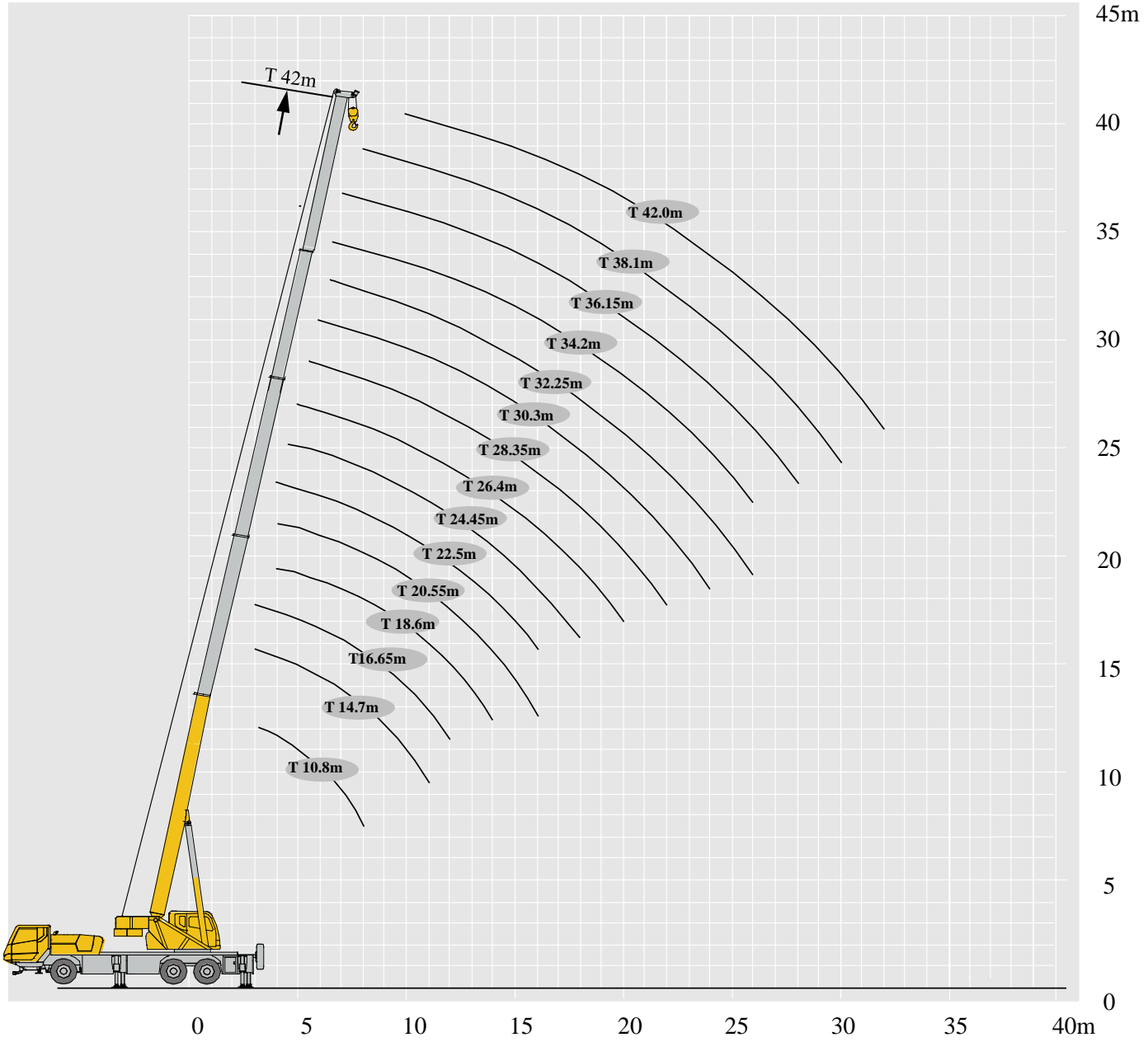


主臂
Telescopic boom

T : 10.8~42m

副臂
Jib

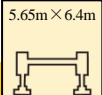

T : 10.8~42m
J : 9 m



起重性能表

Lifting capacities


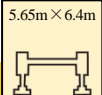


T 10.8~42.0m

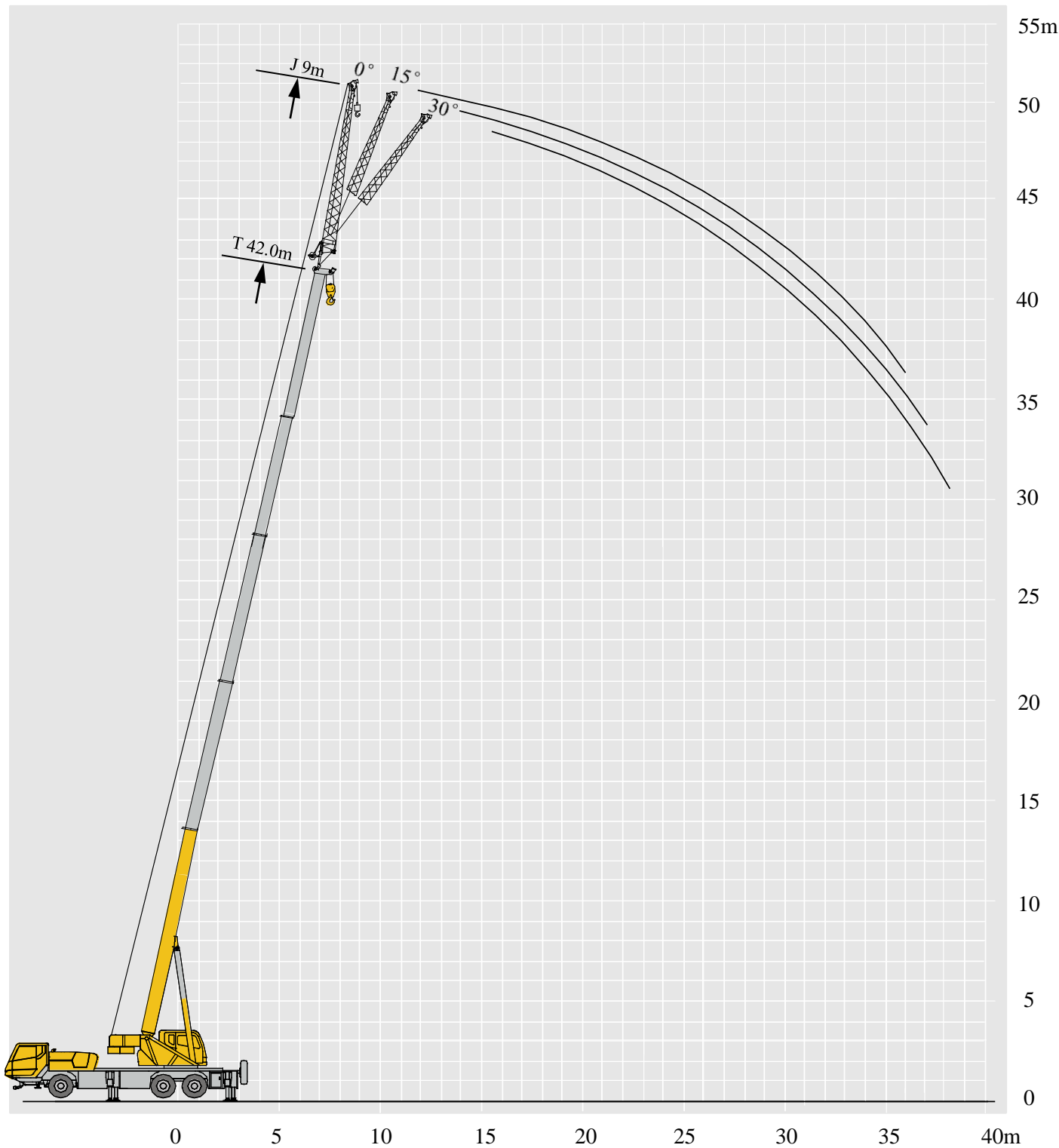
	 10.8-42.0m	 5.65m × 6.4m	 360°					 5t	
	10.8m	14.7 m	18.6m	24.45m	30.3 m	36.15 m	42.0m		
3	30000	25000						3	
3.5	25000	25000						3.5	
4	24800	24000	20400					4	
4.5	23600	23000	19100	18600				4.5	
5	23000	21500	18100	17800				5	
5.5	21000	19400	17100	16800				5.5	
6	19000	17500	16200	15900	12500			6	
6.5	17000	15900	15400	15100	12500			6.5	
7	15000	14500	14600	14500	12500	9000		7	
8	13000	12300	13000	13300	12200	9000		8	
9		10500	11000	11800	11300	9000		9	
10		9000	8900	9700	10200	8500	6100	10	
11		7400	7300	8000	8500	8000	6000	11	
12			6000	6800	7200	7500	5800	12	
13			5000	5700	6200	6500	5600	13	
14			4200	4900	5300	5600	5200	14	
15				4200	4700	4900	4700	15	
16				3700	4100	4300	4500	16	
18				2700	3100	3400	3600	18	
20					2400	2700	2900	20	
22					1800	2100	2300	22	
24					1400	1700	1800	24	
26						1300	1500	26	
28						1000	1100	28	
30							900	30	
32							700	32	

起重性能表

Lifting capacities

T 10.8~42.0m



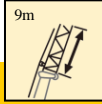
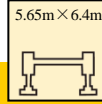



	 10.8-42.0m	 5.65m × 6.4m	 360°	 5t						
	16.65m	22.5 m	28.35m	34.2 m	20.55 m	26.4 m	32.25 m	38.1m		
3	19600								3	
3.5	19600								3.5	
4	19600	18750			19000				4	
4.5	19600	18750			18900				4.5	
5	19600	18000			17900	15600			5	
5.5	19000	17000	11600		17100	15600			5.5	
6	18000	16200	11600		16300	15200			6	
6.5	16200	15500	11600	8500	15500	14400	11500		6.5	
7	15200	14800	11200	8500	14900	13700	11500		7	
8	13800	13800	10200	8400	14200	12500	10600	7200	8	
9	12000	12700	9400	7800	12100	11500	9900	7200	9	
10	10400	10900	8800	7300	10000	10500	9200	7000	10	
11	8700	9200	8000	6800	8300	8800	8400	6600	11	
12	7400	7800	7600	6300	7000	7500	7800	6500	12	
13		6800	7100	5800	6000	6500	6700	6100	13	
14		6000	6200	5600	5200	5600	5900	5800	14	
15		5200	5500	5200	4500	4900	5200	5200	15	
16		4600	4900	4900	3900	4300	4600	4800	16	
18			3900	4100		3400	3600	3800	18	
20			3200	3300		2600	2900	3100	20	
22			2600	2800			2300	2500	22	
24				2300			1900	2000	24	
26				1900				1700	26	
28								1300	28	
30								1100	30	



起重性能表

Lifting capacities

T 41.0m

	    			
	0°	15°	30°	
78	3000	2800	2100	78
75	3000	2500	1900	75
72	2900	2300	1800	72
70	2700	2250	1700	70
65	2200	2100	1600	65
60	1800	1600	1400	60
55	1200	1150	1050	55
50	800	750	700	50
45	450	450	450	45

符号标识

Description of symbols

常规标识

General symbols

	上车 Superstructure		底盘 Chassis
	起重能力 lifting capacity		车桥 Axle
	吊臂长度 Boom length		行驶速度 Driving speed
	工作幅度 Radius		爬坡能力 Gradability
	吊臂仰角 Boom position		轮胎 Tires
	主臂起升高度 Hoist height with Boom		支腿 Outriggers
	固定副臂长度 Fixed jib length		吊钩 Hook block
	副臂安装角 Jib offset angle		卷扬 Winch
	副臂起升高度 Hoist height with jib		使用第五支腿360°全回转 360° rotation with 5th jack
			不使用第五支腿侧后方作业 Over side or over rear of the crane

主要技术参数表

Transportation plan

类别 Category	项目 Item	单位 Unit	参数 Parameter	
尺寸参数 Dimensions	外形尺寸 (长×宽×高) Outline size (length×width×height)	mm	12870×2550×3470	
	轴距 Wheel base	mm	4600+1350	
	轮距 (前/后) Track (Front/Rear)	mm	2074/1834/1834	
	前悬/后悬 Front/Rear overhang	mm	2480/2725	
	前伸/后伸 Front/Rear extension	mm	1715/0	
重量参数 Weight	最大允许总质量 Total weight in travel	kg	33000	
	轴荷 Axle load	一轴 1st axle	kg	7400
		二轴 2nd axle	kg	12800
		三轴 3rd axle	kg	12800
动力参数 Power	发动机型号 Engine model	—	SC9DF340Q5	
	额定功率/转速 Engine rated power/rpm	kW/(r/min)	251/1900	
	最大净功率/转速 Max. net power/rpm	kW/(r/min)	245/1900	
	最大输出扭矩/转速 Engine rated torque/rpm	N.m/(r/min)	1450/1400	
行驶参数 Travel	最高车速 Max. travel speed	km/h	≥80	
	最低稳定车速 Min. travel speed	km/h	2.5 ~ 3	
	最小转弯直径 Min. turning diameter	m	≤21	
	臂头最小转弯直径 Min. turning diameter at boom tip	m	≤27	
	最小离地间隙 Min. ground clearance	mm	260	
	接近角 Approach angle	°	12	
	离去角 Departure angle	°	12	
	制动距离 (制动初速度为30km/h) Braking distance (at 30 km/h)	m	≤10	
	最大爬坡能力 Max. grade ability	%	≥45	
	百公里油耗 Fuel consumption per 100 km	L	30	
噪音 Noise	加速行驶机外噪声 Exterior noise level	dB(A)	≤80	
	驾驶员耳旁噪声 Noise level at seated position	dB(A)	≤80	

主要技术参数表

Transportation plan

类别 Category	项目 Item		单位 Unit	参数 Parameter	
主要性能参数 Main performance	最大额定总起重量 Max. total rated lifting capacity		t	30	
	最小额定工作幅度 Min. rated working radius		m	3	
	转台尾部回转半径 Turning radius at turntable tail	平衡重处 Counterweight	mm	3440	
		副卷处 Auxiliary winch	mm	—	
	最大起重力矩 Max. load moment	基本臂 Base boom	kN.m	1132	
		最长主臂 Fully-extended boom	kN.m	713	
		最长主臂+副臂 Fully-extended boom + Jib	kN.m	492	
	支腿跨距 Outrigger span	纵向 Longitudinal	m	5.65	
		横向 Lateral	m	6.4	
	起升高度 Hoist height	基本臂 Base boom	m	10.2	
		最长主臂 Fully-extended boom	m	40.7	
		最长主臂+副臂 Fully-extended boom + Jib	m	50.2	
	起重臂长度 Boom length	基本臂 Base boom	m	10.8	
		最长主臂 Fully-extended boom	m	42.0	
		最长主臂+副臂 Fully-extended boom + Jib	m	51.0	
副臂安装角 Jib offset angle		°	0、15、30		
工作速度参数 Working speed	起重臂起臂时间 Boom raising time		s	≤35	
	起重臂全伸时间 Boom fully extended time		s	≤95	
	最大回转速度 Max. slewing speed		r/min	≥2.5	
	支腿收放时间 Outrigger extending and retracting time	水平支腿 Outrigger beam	收 Retracting	s	≤20
			放 Extending	s	≤25
		垂直支腿 Outrigger jack	收 Retracting	s	≤20
			放 Extending	s	≤25
起升速度 (单绳,第四层,空载) Hoisting speed (single line, 4th layer, no load)	主起升机构 Main winch		m/min	≥135	
	副起升机构 Auxiliary winch		m/min	≥135	
噪声 Noise	机外辐射 Exterior noise level		dB (A)	≤122	
	司机位置处 Noise level at seated position		dB (A)	≤90	

注意事项

Notes

1. 表中额定总起重量值，是在平整的坚固地面上本起重机能够保证的最大总起重量，包括吊钩和吊具的重量，所以为了估算重物重量，必须减去上述的装置重量。
2. 表中的工作幅度为起吊重物离地时起重物到起重机回转轴线的水平距离，是包括起重臂变形量在内的实际值，因而起吊前应考虑起重臂变形量。
3. 只允许在5级(瞬时风速14.1m/s，风压125N/m²)风以下进行作业。
4. 吊重前操作者必须对物体的重量和工作范围了解后选择合适的作业工况，严禁超出表中的数值。幅度及臂长在相邻两个数值之间时，应依据两个数值中较小值确定起重作业。
5. 应按主臂仰角范围作业，即使是空载，也不应使主臂仰角处于范围外，谨防整机倾翻。
6. 表中的主臂长度应要按照每节臂的伸缩要求进行伸出。

1. The total rated loads given in the rated load charts are the maximum lifting capacity when the crane is set up on firm and level ground, which includes the weight of the hook block and slings. The weight of above-mentioned devices should be deducted to correctly calculate the load weight.
2. The working radius shown in the rated load charts is the radius when the load is lifted off the ground, and it is the actual value including loaded boom deflection.
3. A lifting operation is permissible only when the wind force is below grade 5 (instantaneous wind speed is 14.1 m/s, wind pressure is 125 N/m²).
4. Before beginning lifting operation, the operator should know the weight of the load to be lifted and its working range, and then select proper working conditions. Never operate the crane beyond the limit shown in the chart. Use the lower value from the chart when the boom length or working radius is between the range of values.
5. Observe the boom angle limit. Never operate the crane with the boom angle beyond the recommended limit even if a load is not being carried. Otherwise, the crane will tip.
6. The boom length given in the rated load charts should accord with the telescoping code of boom sections .



地址：中国江苏徐州市铜山路165号

Add : No.165 Tongshan Road Xuzhou Jiangsu China

电话(Tel) : +86-516-83462242/83462350

质量监督电话(Quality Inquiry Tel) : +86-516-87888268

备件电话(Spare Parts Tel) : +86-516-83461542

邮编(Post Code) : 221004

网址(Web) : www.xcmg.com/qizhongji

服务热线 Service Tel

400-110-9999

400-001-5678



本印刷品不属于合同。出于产品不断改进的需要，我们保留对产品型号、参数、配置进行变更的权利，恕不另行通知。图片仅供参考，具体产品以实物为准。图片中产品可能并非标准配置，部分部件可能需要另行购置。办理牌照和上路行驶需遵守当地法规。

This print does not belong to the contract. We reserve the right to modify the design (such as product model, parameters and configuration) without notice for improvement. The pictures are just for reference. The product in the picture may not be standard configuration. Some parts need to be purchased separately. Conform to the local laws for license application and road traveling.