



Maximum lifting height 22,63 m

Maximum reach: 19,80 m

Engine: Mercedes 115 KW - 156 HP

Electronically controlled hydrostatic transmission

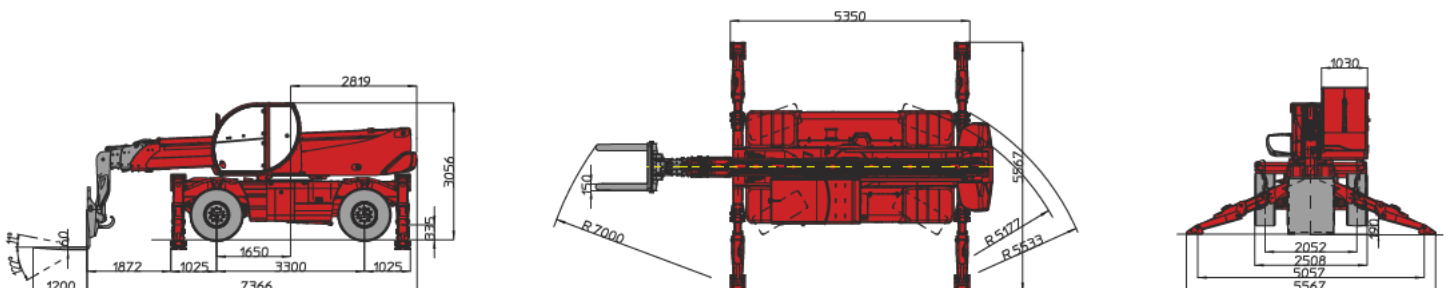
Automatic levelling device

MAGNI patented telescopic stabilizers



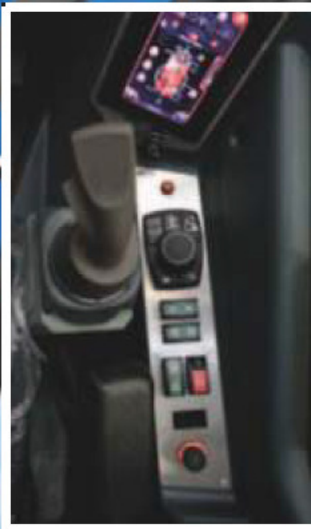
RTH5.23

MACHINE MODEL	Rotating telescopic handler	RTH 5.23
	Maximum lift capacity	4.999 kg (center of gravity 500 mm)
	Maximum lift height	22,63 m
ENGINE	Type	Mercedes OM 924 LA Euro 4 Interim
	Rated power	115 KW at 2,200 rpm
	Maximum torque	550 Nm at 1,200-1.600 rpm
	Displacement	4,8 l
	Cylinders	4 in line
	Fuel	Diesel direct injection turbocharged
	Cooling system	Water – intercooler
TRANSMISSION	Type	Hydrostatic
	Model	Bosch – Rexroth
	Maximum pressure	500 bar
	Displacements	Variable displacement pump (displacement max 85,4 cc/r) electronically controlled Variable displacement motor (displacement max 115,6 cc/r)
	Gear box	2 speeds (4,06-1,43) forward-reward
AXLES AND BRAKES	Total ratio	17,5 on each axle
	Rear axle	Oscillating and steering with hydraulic locking
	Front axle	Oscillating and steering with automatic levelling +/- 10°
	Service brake	Hydraulically activated, oil-immersed multi-disc type on each axle
	Parking brake	Hydraulic with negative action
	Tyres dimensions	18 x 22,5
PERFORMANCE	Max. travel speed	40 km/h
	Drawbar pull	88 kN
	Gradeability	41%
	Turning radius (end of forks)	7,00 m
WEIGHTS	Total unladen	17.500 kg
	Front axle unladen (retracted and lowered)	9.250 kg
	Rear axle unladen (retracted and lowered)	8.250 kg
TANKS CAPACITIES	Fuel tank	200 l
	Hydraulic oil tank	210 l
	Engine oil tank	16 l
	Cooling liquid	20 l
HYDRAULIC CIRCUIT	Max. operating system pressure	350 bar
	Circuit type	Load sensing
	Service pump	Bosch Rexroth – Variable displacement – Flow rate 130 l/min
	Controls for boom and turret movements	Sauer Danfoss – Electroproportional valve SIL2
	Controls for stabilizers	Bosch Rexroth – Electro-hydraulics controls
	Movements control	2 joystick Sauer Danfoss with two shafts with dead man safety device Management with CAN bus technology
DIMENSIONS	Max. length (boom retracted and lowered)	7.366 mm (at vertical point of forks foothold)
	Max. width	2.508 mm (on wheels)
	Max. height (boom retracted and lowered)	3.056 mm (on wheels)
	Wheel base	3.300 mm
	Ground clearance	305 mm
CONFORMITY TO STANDARDS	EN 13489: concerning the safety of all controls of the machine EN 13000: concerning the standard of hydraulic cranes EN 280: concerning the standard of aerial platforms EN 15000: concerning the dynamic stability of the telescopic forklift trucks FOPS/ROPS up to 20 Tons: concerning the standards on cab resistance 97/68/CE: concerning engine emissions standards in force starting from 01/01/2013	

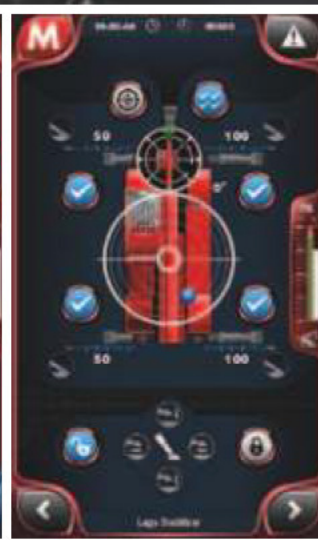


Full visibility cab

MAGNI patented design

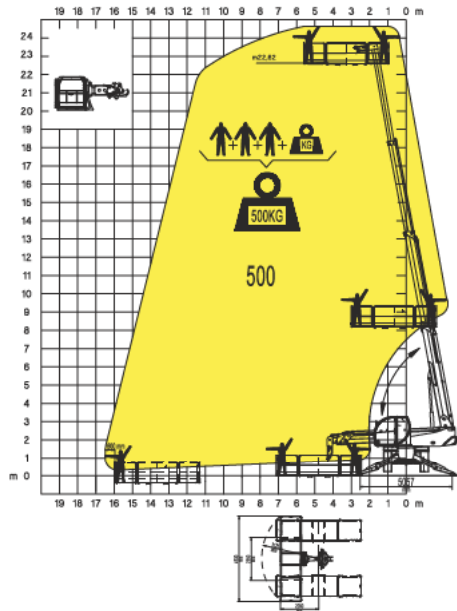


- Pressurized cab ISO10.263
- Standard air conditioning and heating
- Touch screen display with joystick control system

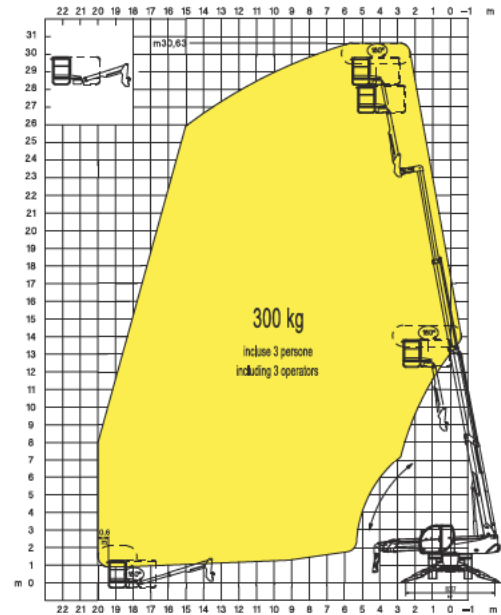


- From the left:
- Travelling mode screen
 - Stabilizers control screen
 - Load Moment Indicator screen
 - Air conditioning management screen

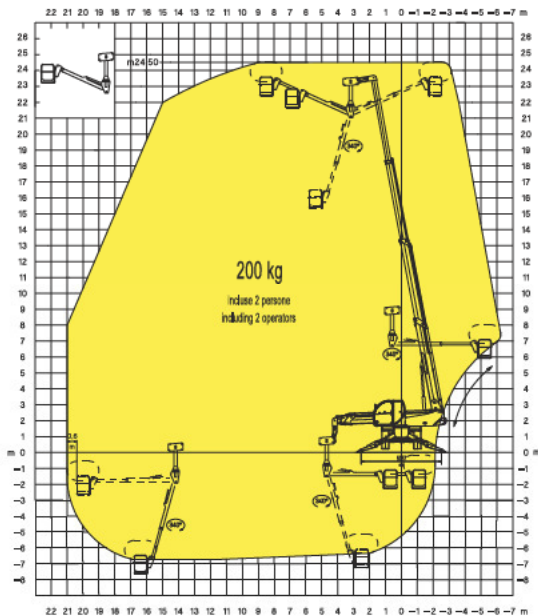
Extendable rotating platform REP 2/5



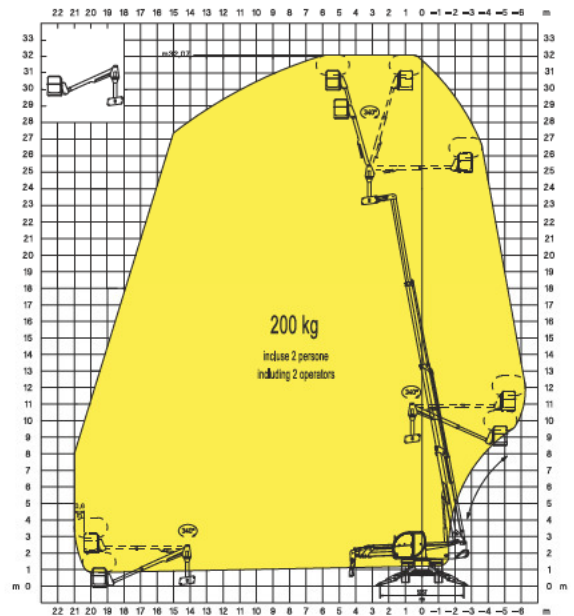
Telescopic jib platform TP



Positive-negative telescopic platform TP O-U

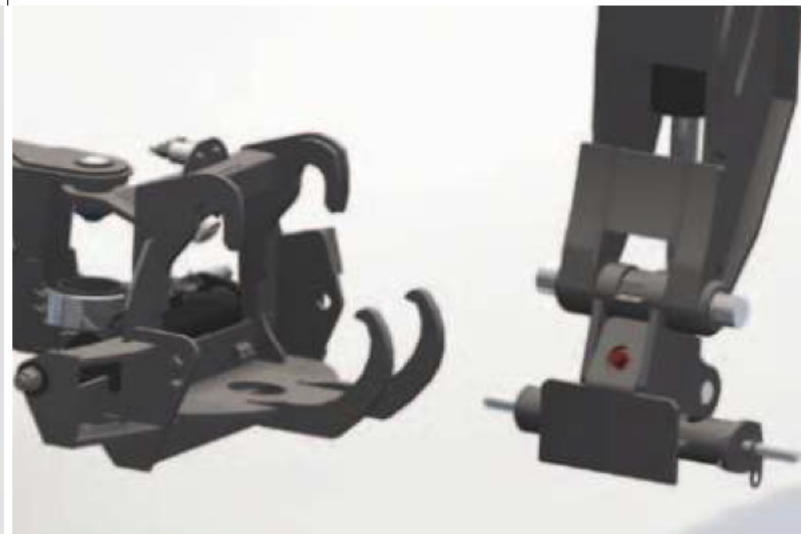


Positive-negative telescopic platform TP O-U



A 3 in 1 machine:

- Telescopic handler
- Hydraulic mobile crane
- Access platform



- Safety device to prevent unhooking of the attachment (MAGNI patent)
- Attachments automatic recognition system RFID

